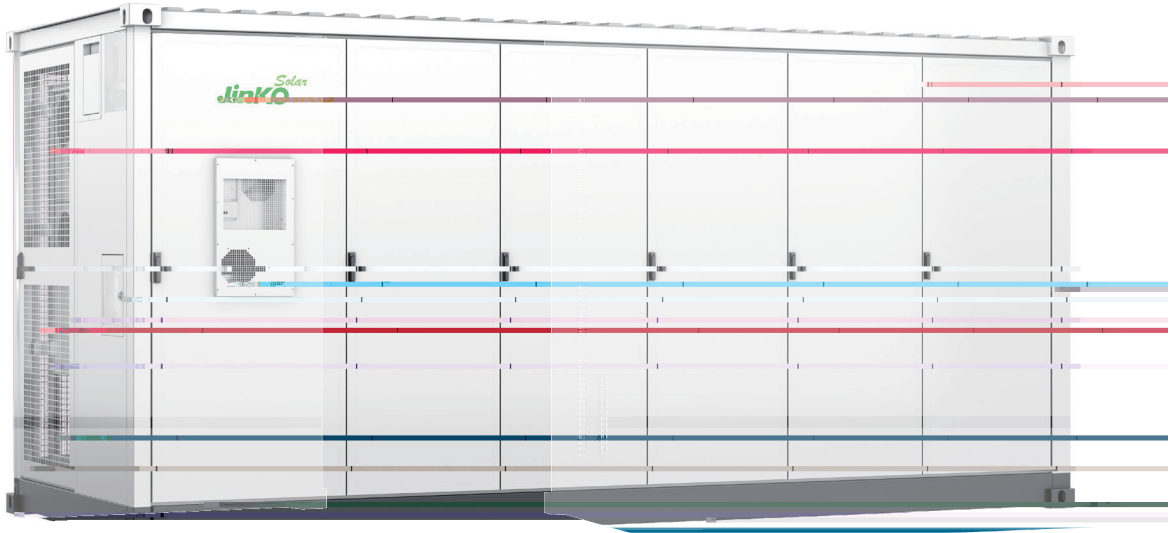


JKE-3440K-2H-LAA



SunTera

280Ah



•

•



•

•

2.5



•

•

1000V / 1500V

PCS

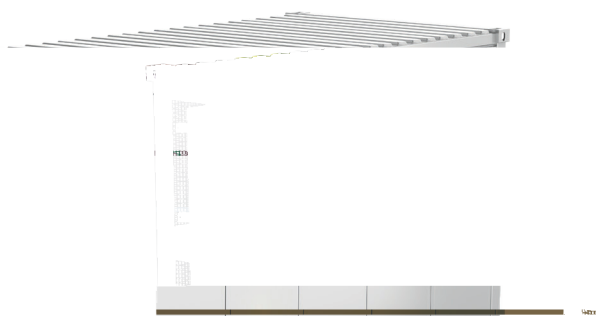


•

•

40

6.88MWh



	(LFP)
	3.2V/280Ah
	0.5P
	1P384S×10
	3.44 MWh
	1228.8V
	1075.2~1382.4V
	-20- 50
	95%RH,
	2000m / < 4000m (,)
	80dB(A), @ 1m
IP	IP54
	-20- 45
	C3 (EN ISO 12944) / C4 () / C5()
	+ + + + +
	Ethernet/Fiber ()
(L×W×H)	6058× 2438× 2896mm
	35000 kg